

Water tank & Pump– Step by Step operating Procedures

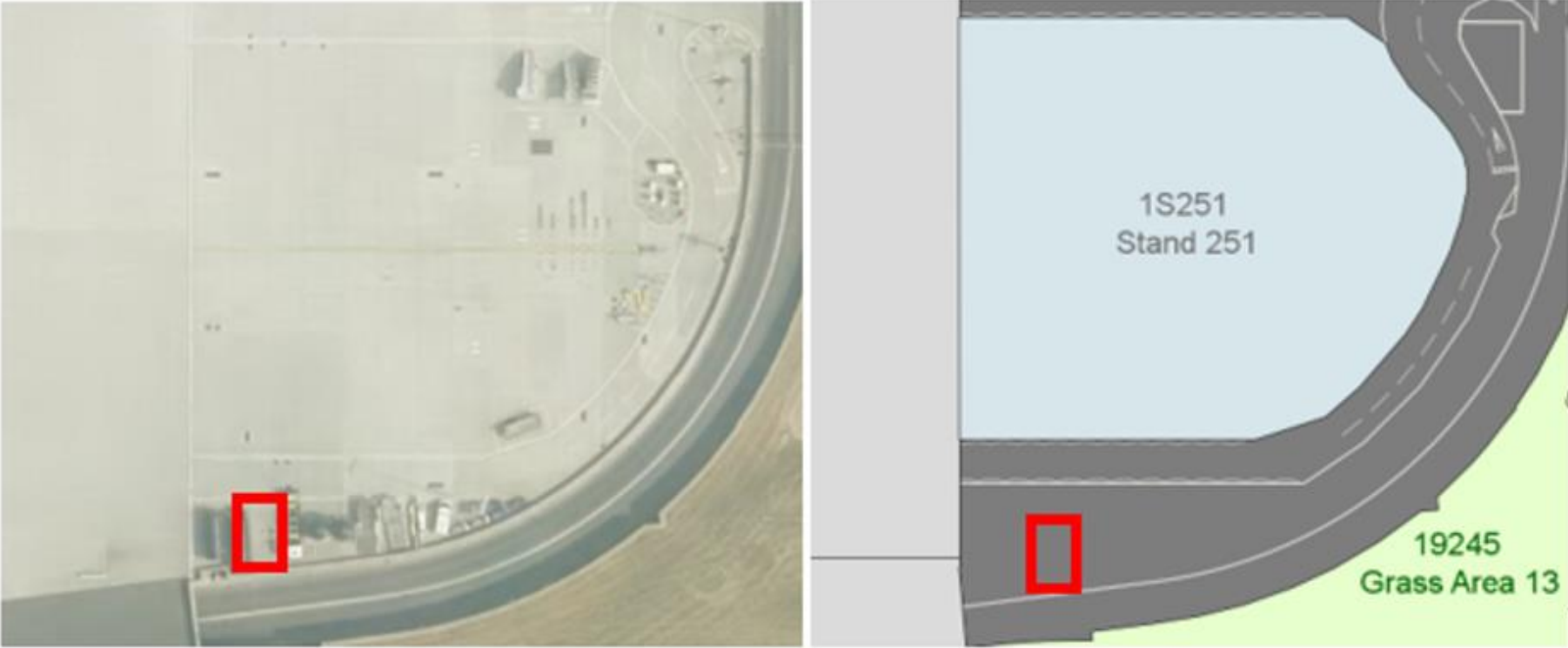
Appendix A

IWJS – Pump and Tank Setup at T2 De-icing (Stand 251) and T5 De-icing (Adjacent to Stand 595)



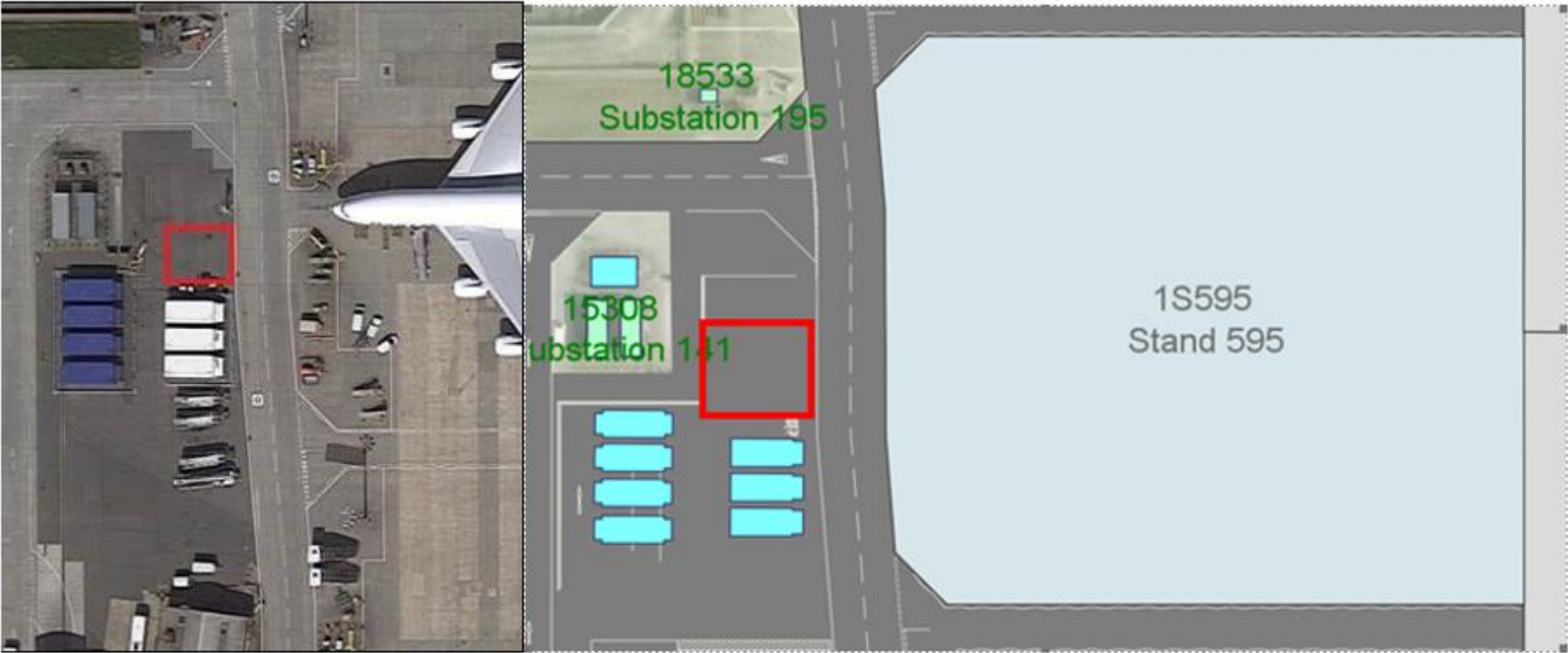
Water tank & Pump– Step by Step operating Procedures

Location of Tank – Stand 251



Water tank & Pump– Step by Step operating Procedures

Location of Tank – stand 594 / 595



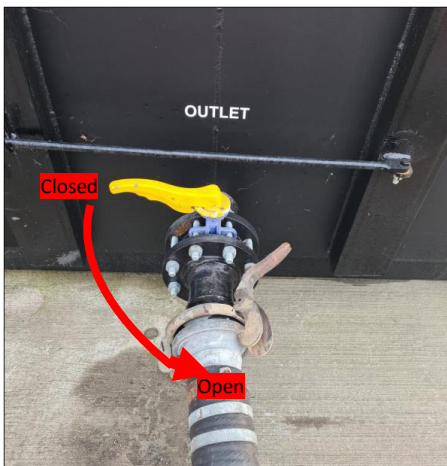
Water tank & Pump– Step by Step operating Procedures

Step by step operating:

1. Filling hose to be connected to Fire Hose connector on discharge from pump unit.



2. Discharge/ outlet Valve to be opened on Water tank by pulling lever to the open position (Parallel with Discharge pipe) This will feed water supply through to the pump inlet.



3. Open the left-hand side Pump door on the Pump unit and locate the control panel in the top right.



Water tank & Pump– Step by Step operating Procedures

4. Turn the key right and to the on '1' position, then turn Pump key left to Hand Position

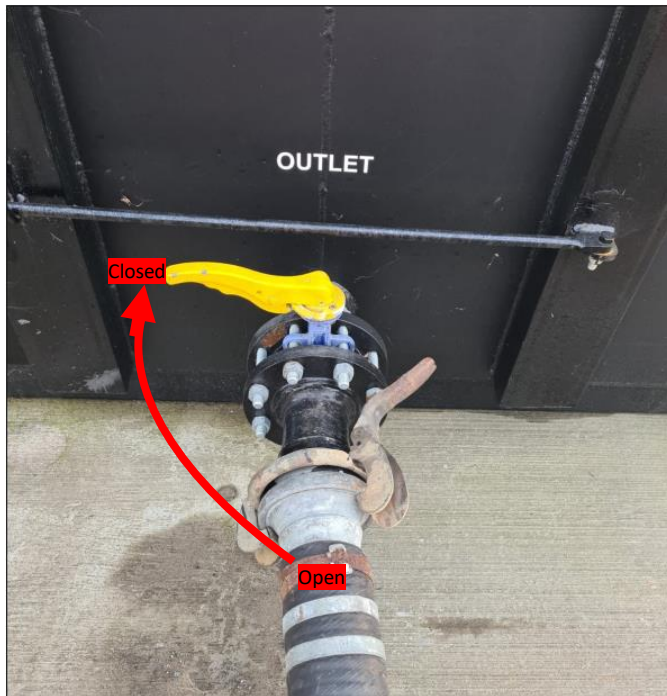


5. The system will self-prime, and water will be pumped onto the vehicle
6. When the vehicle is full, turn the pump key to neutral '0' position and turn the key left to the '0' off position. The operation will stop.



Water tank & Pump– Step by Step operating Procedures

7. The Discharge / Outlet valve on the water tank should then be closed.



8. The Filling hose can then be disconnected from the pump unit discharge hose connector.

For any assistance required, please call our on-call engineer for support: 01753 945890