

# Overview - Management of Engine Ground Running

Heathrow Operations



# How does Heathrow manage ground noise / ground running?

## Rules

- Airlines and ground operators/engineering providers are required to comply with Heathrow's 'Conditions of Use' and/or 'Ground Operations License'.
- A clause within both documents requires adherence with Heathrow's 'Operational Safety Instructions' (OSI)
- Various OSI's apply to the management of ground noise – particularly important is **OSI 061** "Ground Noise at Heathrow – Approval Control Process and Safety of Engine Ground Running" and **OSI 078** "Use of Aircraft Auxiliary Power Units"
- **OSI 061**;
  - Details the process for approval of engine ground running during the day and night period.
  - Sets out the requirements for location, duration and operational safety
  - Sets limits for total duration of engine running during the night period
- **OSI 078**;
  - Sets out limits for use of Auxiliary Power Units (APU) by aircraft on stand

# How does Heathrow manage ground noise / ground running?

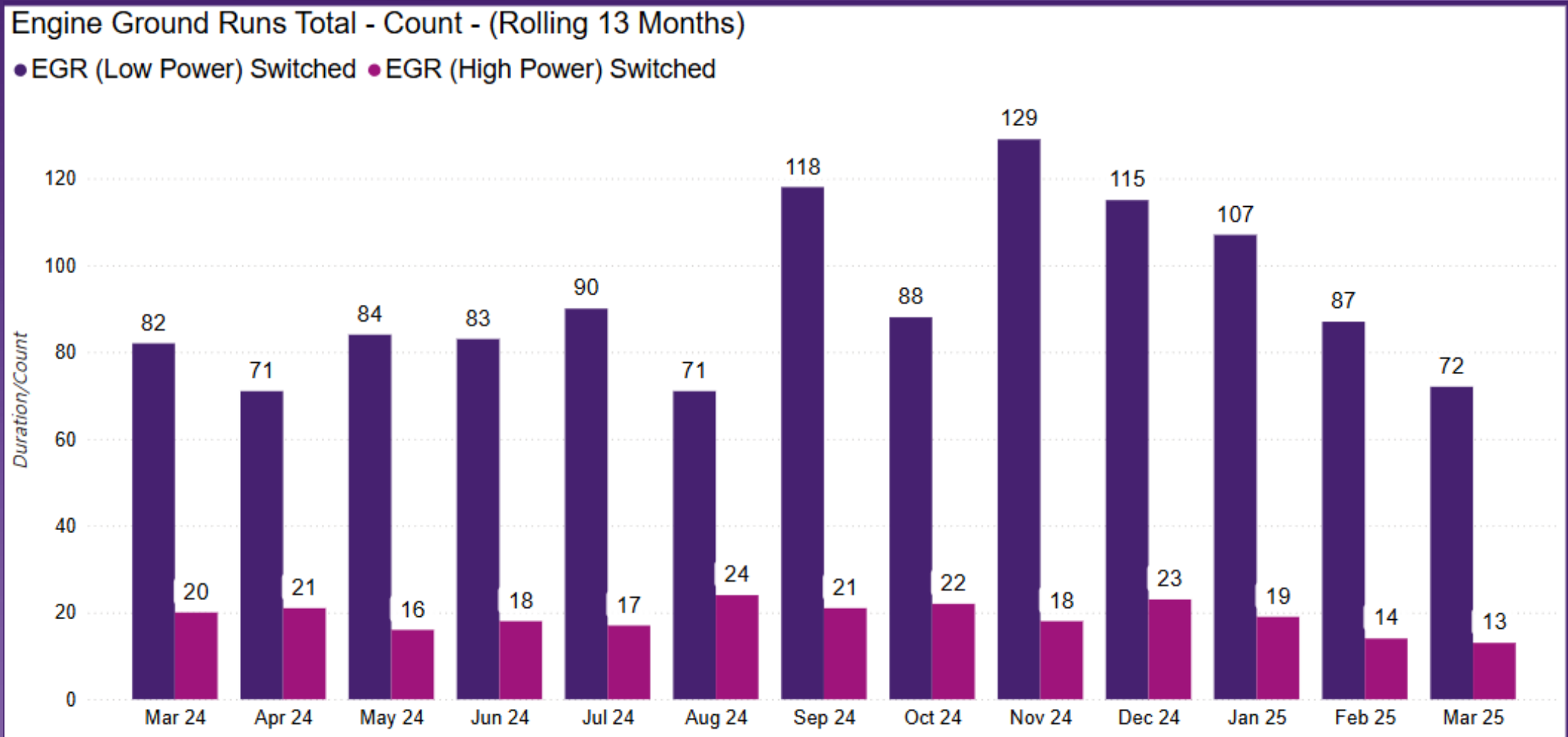
## Process

- Heathrow's Airfield Operations department manages the approval process for engine ground running; ensuring that operational restrictions are adhered to;
  - High power engine runs during the night period must be in an engine run pen
  - Limits on duration within the airfield footprint (on terminal stands)
  - Details on start/finish time, location, reason for run are recorded accurately
- All engine run requests which are not associated with an immediate departure are subject to an approval process and recorded
- As part of an aircraft turnround audit process, times for APU usage are recorded and used to manage compliance
- Regular overnight Airfield patrols seek to identify any unapproved sources of ground noise such as APU or GPU (ground power unit) running



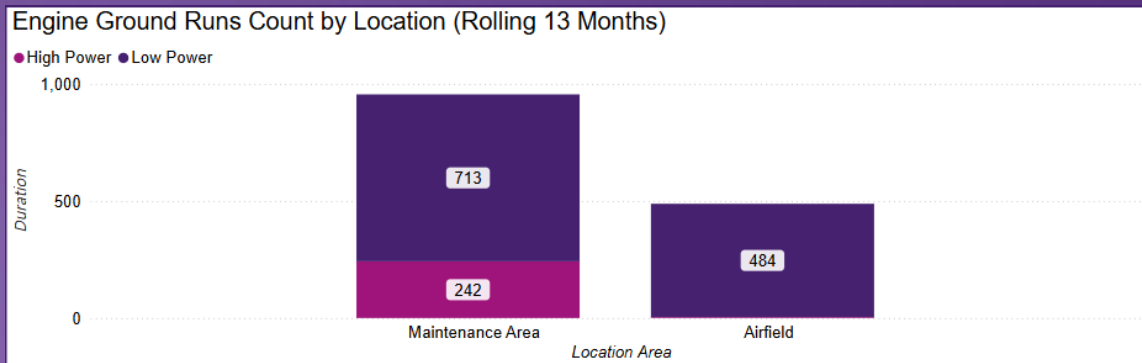
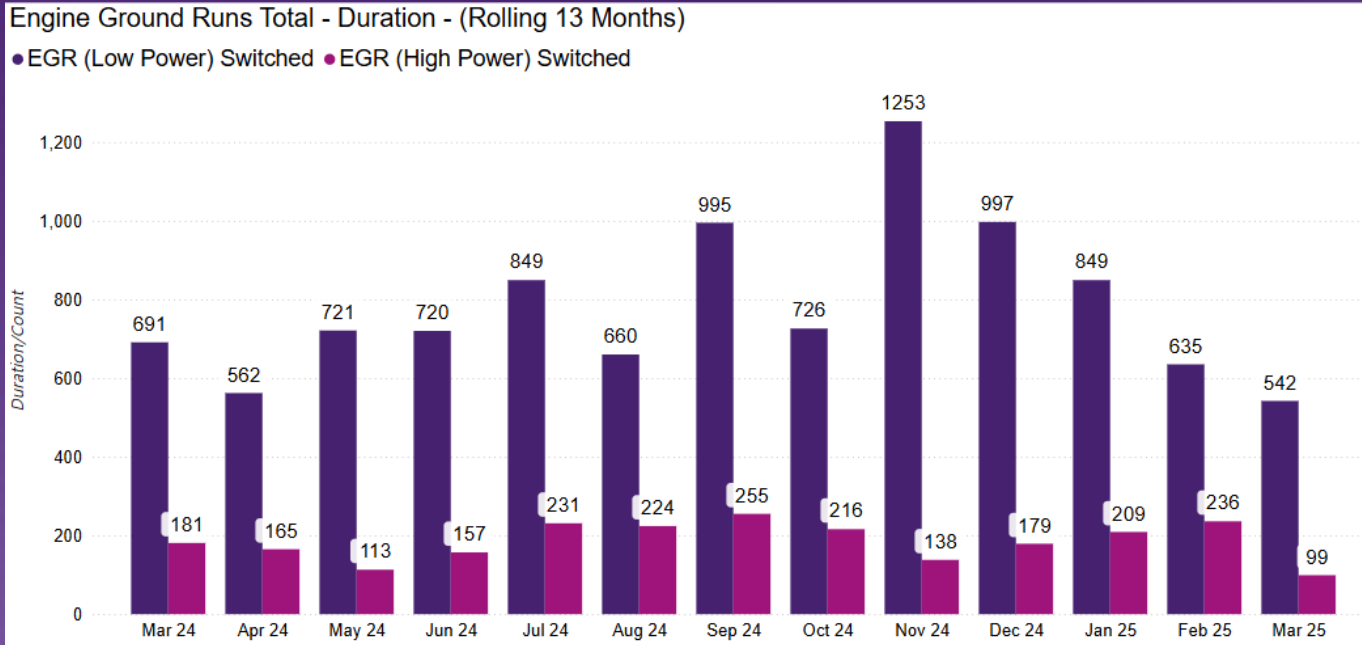
# How does Heathrow manage ground noise / ground running?

## Heathrow engine ground run data



# How does Heathrow manage ground noise / ground running?

## Heathrow engine ground run data



- This data shows the duration of engine runs during the night period (2300-0700) over the last 13 months.
- The limits are;
  - Total running time per night must not exceed 150 minutes
  - High power running per night must not exceed 60 minutes
  - High power running per night must not exceed 20 minutes over a rolling 30-day average period
- High power means any setting above ground idle
- All high-power engine running in the night period must occur in a ground running pen (maintenance areas)

**Heathrow**